



VISION EXTREME 76 C



VISION EXTREME 76 C Model number: 22VRX16763CH19

3 beds • 2 baths • 1216 sq.ft. • 16' width • 76' depth

Our home building facilities invest in continuous product and process improvements. Plans, dimensions, features, materials, specifications and availability are subject to change without notice or obligation. Renderings and floor plans are representative likenesses of our homes and may differ from the actual homes. We invite you to tour a Home Center near you and inspect the highest value in quality housing available or call (888) 369-5002 to speak with a Home Consultant. Copyright 2017, CMH. All rights reserved.

<https://www.claytonhomesdanville.com>

CLAYTON HOMES-TURTLE CREEK

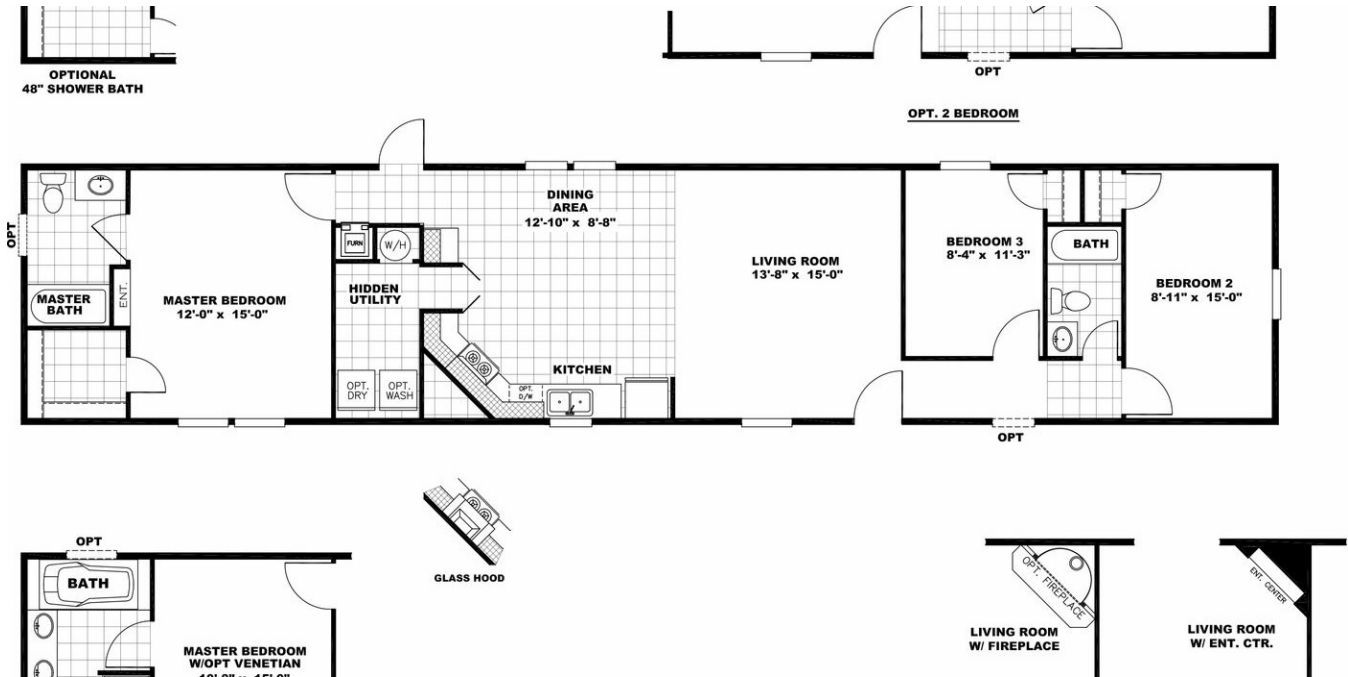
ROUTE 119 NORTH
TURTLE CREEK, WV 25203

Monday - Thursday: 9am - 7pm
Friday: 9am - 6pm
Saturday: 9am - 5pm
Sunday: Closed

(888) 369-5002



VISION EXTREME 76 C



VISION EXTREME 76 C

Model number: 22VRX16763CH19

3 beds • 2 baths • 1216 sq.ft. • 16' width • 76' depth

Our home building facilities invest in continuous product and process improvements. Plans, dimensions, features, materials, specifications and availability are subject to change without notice or obligation. Renderings and floor plans are representative likenesses of our homes and may differ from the actual homes. We invite you to tour a Home Center near you and inspect the highest value in quality housing available or call (888) 369-5002 to speak with a Home Consultant. Copyright 2017, CMH. All rights reserved.

<https://www.claytonhomesdanville.com>

CLAYTON HOMES-TURTLE CREEK

ROUTE 119 NORTH
TURTLE CREEK, WV 25203

Monday - Thursday: 9am - 7pm
Friday: 9am - 6pm
Saturday: 9am - 5pm
Sunday: Closed

(888) 369-5002